

ACCOMMODATION & ACTIVITIES

- Pricing effective from 1st January 2026
- Accommodation prices are based on self cleaning of facility before departure.

Standard Check-In / Check-Out Times

please note

Our camp-site has standard check-in and check-out times.

- Please check your hire agreement for your booking check-in and check-out time.
- Any groups wanting an early check-in or late check-out **MUST** arrange at the time of booking and will only be facilitated if a prior or subsequent group has not also booked an early check-in or late check-out
- A groups check-in and check-out times are enforced so that we can reset and clean the camp between groups.
- **Please note: any non-arranged early arrivals and/or late departures will incur a \$100 fee.**

check in / arrivals

2pm Arrivals on Monday to Saturday

4pm Arrivals on Sunday

check out / departures

10am Departures on Monday to Saturday

4pm Departures on Sunday

Accommodation: Group Rate

total camp capacity

28 rooms

131 beds

19 toilets

20 showers

features

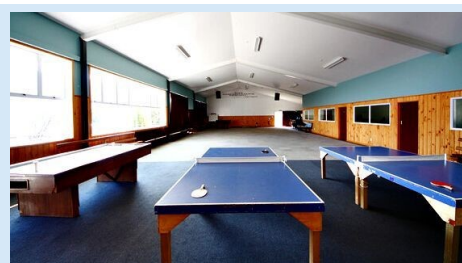
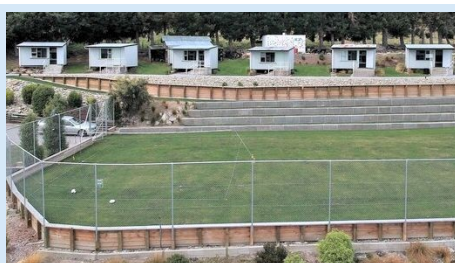
- **Large groups** wanting exclusive use should book the whole site.
- **Medium groups** can book multiple areas if not needing whole site and the minimum night charge is based on the areas booked.

pricing



\$36 per person per night

\$10 per day visitor per day (see note below about day visitors)


\$2140 per night minimum charge for whole site
(this is for bookings of 60 paying persons or less)

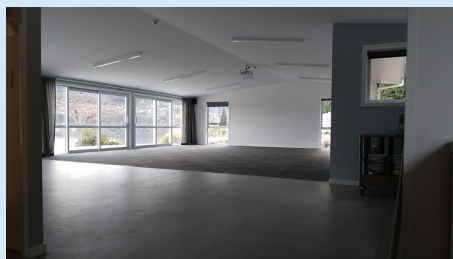
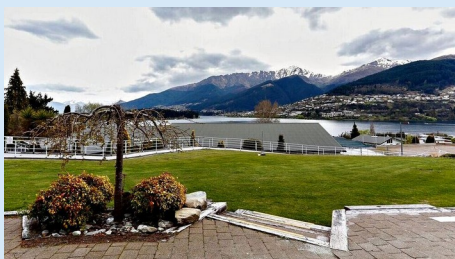


Accommodation: Main Camp

capacity	11 rooms	74 single beds	10 toilets	12 showers
features	<ul style="list-style-type: none"> • a large auditorium seating 200+ • a large commercial kitchen • a large dining room with chairs and tables to seat 160 campers • an outside patio & BBQ area • a large grassed activities area • the Kawarau Accommodation Block <ul style="list-style-type: none"> ◦ 5 dorm rooms with bunks for 10 people in each • the Rees Cabins <ul style="list-style-type: none"> ◦ 6 individual cabins with bunks for 4 people in each • a warm & central bathroom block 			
pricing	<p>\$36 per person per night</p> <p>\$10 per day visitor per day (see note below about day visitors)</p> <p>\$800 per night minimum charge (this is for bookings of 23 paying persons or less)</p>			
supplied				
available for hire				

Accommodation: Shotover Block

capacity	7 rooms	28 single beds	4 toilets	3 showers
features	<ul style="list-style-type: none"> • a lounge / dining area with seating for 30 • a small commercial kitchen • an outside patio & BBQ area with stunning views • the Shotover Accommodation includes <ul style="list-style-type: none"> ◦ 7 dorm rooms with bunks for 4 people in each • the unisex bathrooms are wheelchair friendly 			
pricing	<p>\$36 per person per night</p> <p>\$10 per day visitor per day (see note below about day visitors)</p> <p>\$480 per night minimum charge (this is for bookings of 14 paying persons or less)</p>			
supplied				
available for hire				



Accommodation: Chalets

capacity (each chalet)	4 rooms	12 single beds	2 toilets	2 showers
features	<ul style="list-style-type: none"> • Our 2 chalets each feature: <ul style="list-style-type: none"> ◦ a large open plan lounge / dining / kitchen area ◦ 4 private bedrooms (two twin and two bunk-rooms) ◦ a large private outdoor deck with outstanding views • Chalet 1 is wheelchair friendly 			
pricing (each chalet)	<p>Chalet Tariff \$350 per night (includes 5 persons and linen) \$60 per extra person per night (includes linen)</p> <p><i>Note: Group rate not permitted if just booking Chalets and no other areas.</i></p>			
supplied				
available for hire				


Accommodation: Flat

capacity	2 bedrooms	1 queen / 2 singles	1 toilet	1 shower
features	<ul style="list-style-type: none"> • a large open plan lounge / dining / kitchen area • 2 private bedrooms (one queen and one twin) • 2 additional roll-away beds can be set up in the lounge • Outstanding views of mountains and lake. • Laundry with washing machine and dryer provided 			
pricing	<p>Flat Tariff \$160 per night (includes 2 persons and linen) \$60 per extra person per night (includes linen)</p> <p><i>Note: Group rate not permitted if just booking Flat and no other area.</i></p>			
supplied				

Accommodation: Powered Sites / Tent Sites

capacity	10 powered sites / Lots of tent sites
features	<ul style="list-style-type: none">• A large flat area with 10 powered connections for caravans or camper-vans• Lots of tenting areas with stunning views of the mountains and lake
pricing	\$36 <u>per person per night</u>
important note	Our powered sites & tent sites are only available for groups that are booked into the Main Camp (or a Chalet) as they must utilize the main bathroom block (or Chalet bathrooms).

Day Use Only

features	<ul style="list-style-type: none">• Hire any of the areas or whole camp for a day camp• Use of full kitchen facilities with plates and cutlery available
pricing	\$10 <u>per person per day</u> <u>Minimum per night charge applies for each area used</u> <ul style="list-style-type: none">• e.g. 15 people using main camp for day would be \$800 and 88 people using main camp would be \$880
supplied	

On-Site Activities

archery shooting	<u>\$120 per hour</u> includes all equipment and instructor <ul style="list-style-type: none">• 5x Compound Bows (adult and children sizes) with targets.• Lakeland Park instructor must be used for this activity.
bouldering wall	Free to use
disc golf	Free to use <ul style="list-style-type: none">• Lost discs charged at \$25 each
flying fox	Free to use <ul style="list-style-type: none">• Adult supervision required when in use
geocaching	<u>\$350 per session</u> includes all equipment and instructor <p>Find 24+ private geocaches around the Lakeland Park camp-site using our GPS units. Geocaching is an international sport of treasure hunting using a GPS to find hidden and camouflaged containers - it's a bit like orienteering but stepped up with technology and rewards.</p> <ul style="list-style-type: none">• 10x Garmin eTrex GPS units provided• Lakeland Park instructor included as part of price• Up to 50 people can play at one time in 10 groups• 1 to 3 hours in length• Full instructions, 10 GPS units, geo-caches and rewards supplied
orienteering course	Free to use
water slide	<u>\$120 per day used</u> <ul style="list-style-type: none">• Large waterslide can be rolled out for use by children and adults.

Icons Legend



Cleaning Supplies

- We supply all cleaning supplies and equipment.
- We also supply tea towels for groups.



Toilet Paper, Hand Soap and Paper Towels

- We supply these things so you don't need to bring them.



Linen Packs

- \$25 per person unless staying in Chalets or Flat (on the standard rates)
- Includes sheets, duvet, pillow and towel
- 2 weeks notice needed for numbers



Laundry Available

- Laundry is available at the Main Camp
- \$3 per washer load
- \$3 per dryer load



Dining Room Fireplace

- We have an open fireplace in the Main Camp dining hall. You are welcome to bring your own firewood.
- We can provide firewood but the firewood bin(s) must be reloaded by your group as directed by the camp managers.

Other Notes:

cleaning

Groups must leave the facility clean and tidy.

- Cleaning instructions are found in all areas and cleaning must be **fully completed** before you depart.
- Groups will be charged for any cleaning or tidying that is required to bring our facilities back to our high standard.

Cleaning Charges:

- Any cleaning or tidying completed by our staff after you leave will be charged at the rate of **\$150 per hour or part thereof** if required.
- Groups that have previously left our facilities untidy before departure will be charged at **\$200 per hour or part thereof**

damages

Groups must report all breakages & damage

- All breakages and/or damage (whether accidental or malicious) will be charged to your group – this includes broken windows and brooms.
- Repairs to breakages and damage will be arranged by LPCC using our preferred contractors / suppliers and charged for accordingly.
- Minor accidental one-off breakages (i.e. a plate or a cup) must be reported but will not be charged for

day visitors

Day Visitors are those attending for the full day

- We define day visitors as those people that are fully participating in your camp each day but not staying overnight (e.g. a person that arrives in the morning, stays the day and departs at the end of the day).
- People visiting campers for a few hours, attending one meal or attending just one session for a few hours **do not** count as day visitors and won't be charged for.

deposit

Non-refundable deposit required to confirm bookings

- A non-refundable deposit to the value of 1 nights minimum charge for all the areas your group has booked. Refer to your hire agreement for further details.

what you need to bring

Bedding and Towels

Unless you are hiring linen packs from Lakeland Park (**\$25 per person**) you will need to bring bedding, pillows and towels

- If you forget something we have limited stock you can hire:
 - Pillows: \$5 each
 - Sheets and Duvet: \$15 per set
 - Towels: \$5 each

Food!

- Lakeland Park does not cater for camps.
- We can provide a list of caterers you can approach if you require this service